



PRODUCT CATALOGUE

KASHI GRASS



KASHI GRASS

“Weaving Nature, Sustaining Lives”

Kashi Grass (*Saccharum spontaneum*) is a fast-growing, tufted perennial grass that flourishes naturally in the forest fringe areas of Jharkhand, especially during the post-monsoon season. Known for its resilience and ecological value, this grass can grow up to 3 meters tall, with spreading rhizomatous roots that help prevent soil erosion and support biodiversity in its native habitat. The stems are slender yet sturdy, with slightly hardened nodes and narrow, blunt-edged leaves that sway gracefully in the wind.

This eco-friendly and fully biodegradable resource is traditionally harvested by women, who play a key role in its collection and initial processing. After being carefully washed, sun-dried, and bundled, the grass becomes ready for craftwork or commercial use.

Among the communities that have nurtured this craft through generations, the Sabar community in Nimdih block stands out for their distinctive basketry tradition. Their handcrafted baskets are made by intricately intertwining Kashi Grass with date palm leaves, creating products that are both durable and beautiful. These artisanal goods reflect a deep understanding of local ecology and aesthetics, and offer a sustainable livelihood option to forest-dependent communities.

In a time when the world is seeking eco-conscious alternatives, Kashi Grass offers a compelling solution—abundant, renewable, and low-impact. Its transformation into functional art is not just a matter of heritage; it's a pathway to green economy and women-led rural enterprise.



THE VILLAGES

The main villages of Kashi grass product making are Makula and Bhangat in Nimdih Block of Seraikela Kharsawan district. Located on the foothills both of these villages are known for making of exquisite Kashi grass products. The artists are well skilled and make traditional baskets, trays, boxes, containers, lamp shade, planters.



PROCESS

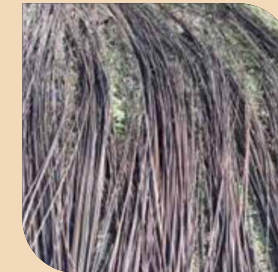
From Harvest to Handicraft

The journey of Kashi Grass from the wild to a finished handcrafted basket is deeply rooted in tradition, community knowledge, and eco-friendly practices.

1 Harvesting and Collection



2 Drying & Sorting



3 Cutting & Twisting



4 Dyeing



5 Weaving/Coiling/Knitting



6 Designing the products



PRODUCT RANGE

BASKETS



Storage Basket
Code | KSB001
Size | 12" x 12" x 4"
Price | Rs. 350/-



Storage Basket
Code | KSB002
Size | 12" x 12" x 4"
Price | Rs. 325/-



Round Basket
Code | KSB003
Size | 11" x 11" x 4"
Price | Rs. 360/-



Oval Basket
Code | KSB004
Size | 10" x 7" x 4"
Price | Rs. 215/-



Small Round Basket

Code | KSB005
Size | 8" x 8"
Price | Rs. 225/-



Basket with lid

Code | KSB006
Size | 12" x 12" x 8"
Price | Rs. 360/-



Storage Basket

Code | KSB009
Size | 12" x 12" x 6"
Price | Rs. 515/-



Flat Basket

Code | KSB007
Size | 10" x 10" x 2"
Price | Rs. 300/-



Oval Basket 1

Code | KSB008
Size | 12" x 7" x 4"
Price | Rs. 380/-



Oval Basket 2

Code | KSB010
Size | 12" x 7" x 4"
Price | Rs. 255/-



Oval Basket 3

Code | KSB011
Size | 12" x 7" x 2"
Price | Rs. 298/-

TRAYS



Tray 1

Code | KST001
Size | 10" x 10" x 3.5"
Price | Rs. 325/-



Tray 2

Code | KST002
Size | 9" x 9" x 2.5"
Price | Rs. 295/-



Spiral Tray 1

Code | KST005
Size | 12" x 12" x 7"
Price | Rs. 375/-



Spiral Tray 2

Code | KST006
Size | 12" x 12" x 7"
Price | Rs. 375/-



Fruit Tray with 4 legs

Code | KST004
Size | 10" x 10" x 3.5"
Price | Rs. 372/-



Round Tray

Code | KST003
Size | 12" x 12" x 2.5"
Price | Rs. 372/-



Oval Tray

Code | KST007
Size | 12" x 7" x 2"
Price | Rs. 300/-



Flat Tray

Code | KST008
Size | 15" x 15" x 3"
Price | Rs. 420/-



Tray with lid

Code | KST009
Size | 12" x 12" x 7"
Price | Rs. 536/-

CONTAINER



Container 1
Code | KSC001
Size | 10" x 10" x 4"
Price | Rs. 450/-



Container 3
Code | KSC003
Size | 7" x 7" x 3"
Price | Rs. 297/-



Container 4
Code | KSC004
Size | 7" x 7" x 3"
Price | Rs. 297/-

LAMPSHADES



Hanging Lamp 1
Code | KSL001
Size | 12" x 6" x 6"
Price | Rs. 450/-



Hanging Lamp 2
Code | KSL002
Size | 7" x 7" x 8"
Price | Rs. 335/-



Hanging Lamp 3

Code | KSL003
Size | 12" x 12" x 9"
Price | Rs. 360/-



Hanging Lamp 4

Code | KSL004
Size | 12" x 12" x 8"
Price | Rs. 330/-



Table Lamp

Code | KSL005
Size | 7" x 7" x 9"
Price | Rs. 360/-

WALL PLATES



Big Wall Plate

Code | KSWP001
Size | 14" x 14"
Price | Rs. 420/-



Wall Plate

Code	KSWP002
Size	12.5"x12.5" / 10"x10" / 8x8"
Price	Rs. 320 / Rs. 285 / Rs. 238

Wall Plate

Code	KSWP003
Size	12"x12" / 10"x10"
Price	Rs. 320 / Rs. 285



Big Wall Plate

Code	KSWP004
Size	18" x 18"
Price	Rs. 535/-



Big Wall Plate

Code	KSWP005
Size	16" x 16"
Price	Rs. 535/-



Wall Plate

Code	KSWP006
Size	10" x 10"
Price	Rs. 300/-



Wall Plate

Code	KSWP007
Size	10" x 10"
Price	Rs. 200/-

PLANTER



Hanging Planter

Code	KSP001
Size	14"x14" / Basket size - 8"x8"x3"
Price	Rs. 410/-

TRIVET



Trivet

Code	KSTV001
Size	12" x 12"
Price	Rs. 140/-

ARTIST CONTACT

Banamali Sabar	7856082101
Biswanath Sabar	7856082101
Sumitra Sabar	7061966737
Ranghu Sabar	7858971723
Srimoti Sabar	9199479387
Naresh Sabar	6296026221





Contact Base has partnered with Axis Bank Foundation on the “Roots to Prosperity” project to enhance culture-based livelihoods of Kashi Grass weavers of Nimdih, Jharkhand.

 www.banglanatak.com

 Heritage4Prosperity

 Heritage4Prosperity